



Welcome Class of 2030!

FAIRVIEW
WARRIORS



Tonight's Agenda

INTRODUCTION OF CAMPUS STAFF

DAILY OPERATIONS/EXPECTATIONS

ATTENDANCE PROCEDURES

ACADEMICS

COURSES OFFERED

STUDENT SKILLS PROFILE

DESIGN, PROCESS AND VALUES

ACADEMIC TOOLS

SUPPORT SERVICES

SCHOOL COUNSELING

CLUBS & UPCOMING ATHLETIC OPPORTUNITIES

SCHEDULE DISTRIBUTION/SELF-GUIDED TOUR

Mr. Chris Vicha Campus Principal

PRINCIPAL: GRADES 6-12

PHONE: (440) 356-3500 X 4106

CVICHA@FAIRVIEW.K12.OH.US



: @FHSPRINCIPAL

Located in High School Main
Office

16 Years with FPCS



Mrs. Heather Kaminski
LFM ASSOCIATE PRINCIPAL

ASSOCIATE PRINCIPAL: GRADES 6-8

PHONE: (440) 356-3510 X 3100

HKAMINSKI@FAIRVIEW.K12.OH.US



:@HEATHERKAMINSKI6

**LOCATED IN THE MIDDLE SCHOOL
MAIN OFFICE**

2 years with FPCS



Mr. Chris Honeck
FHS ASSOCIATE PRINCIPAL

ASSOCIATE PRINCIPAL: GRADES 9-12

PHONE: (440) 356-3500 X 4101

choneck@fairview.k12.oh.us



@fhswarriors_ap

**LOCATED IN THE HIGH SCHOOL MAIN
OFFICE**

9 YEARS WITH FPCS



Teachers

Ms. Smigelski - Math



Mr. Fickel - Math



Mr. Hicks - ELA



Mr. Ruic - Int. Spec.



Ms. Chambers - Social Studies



Mrs. Conner - Science



:@FPSchools_sixth

Middle School Counselor

MRS. MARY CORY

PHONE: (440) 356-3500 X 3135

MCORY@FAIRVIEW.K12.OH.US



@Fviewcounselors

COUNSELOR: GRADES 6-9
14 YEARS WITH FPCSD

LOCATED IN THE CAMPUS SCHOOL
COUNSELING OFFICE



MIDDLE SCHOOL SECRETARY

MS. VICTORIA McELROY

PHONE: (440) 356-3510

VMCELROY@FAIRVIEW.K12.OH.US

LOCATED IN THE MIDDLE SCHOOL
MAIN OFFICE

GUIDANCE SECRETARY

MRS. JULIE MOOMAW

PHONE: (440) 356-3500 Ext. 4147

JMOOMAW@FAIRVIEW.K12.OH.US

LOCATED IN THE CAMPUS SCHOOL
COUNSELING OFFICE



ATTENDANCE SECRETARY

MS. JAN LOCKWOOD

PHONE: (440) 356-3500 X 4104

JLOCKWOOD@FAIRVIEW.K12.OH.US

LOCATED IN THE CAMPUS
ATTENDANCE OFFICE



ATHLETIC DIRECTOR

MR. JON ADAMS

PHONE: (440) 356-3500 X 4157

JADAMS@FAIRVIEW.K12.OH.US



[@FPWarriorSports](https://twitter.com/FPWarriorSports)

MIDDLE AND HIGH SCHOOL
ATHLETICS/CLUBS AND ACTIVITIES

LOCATED NEAR HIGH SCHOOL GYM

DAILY OPERATIONS/EXPECTATIONS

PBIS

DROP-OFF/PICK-UP

BELL SCHEDULE

8/22 1st DAY SCHEDULE - HOMEROOM

LOCKERS

TECHNOLOGY

HALLWAY BEHAVIOR

LUNCH/MENTORING

ABSENCES - Tardies



PBIS

- Framework put into place to support students and staff that focuses on relationship building, working together & proactively to build/enhance the sense of community in the building.
- Common set CORE BELIEFS
 - P.R.I.D.E.
- Student recognition will focus on the PRIDE acronym.





DROP-OFF/PICK-UP

- **NORTH CAMPUS DOORS AND FRONT DOORS OF THE HIGH SCHOOL**
- **PARENTS MAY ENTER THE PARKING LOT OR PARK ALONG W. 213 (EAST SIDE OF STREET)**
 - **CAFETERIA OPEN AT 7:00 FOR EARLY ARRIVAL AND BREAKFAST.**
 - **Students remain in cafe until the start of their classes @ 8:10.**
 - **After 8:30 students will enter through the front High School entrance**
- **CAMPUS DRIVE RESERVED FOR TRANSPORTATION DEPT. BUSESSES AND VANS ONLY**
- **WALKERS MAY ENTER THROUGH CAMPUS DRIVE DOORS**
- **BIKE RACKS LOCATED ON NORTH SIDE OF THE BUILDING NEAR HIGH SCHOOL GYM (LOCK IT UP!)**
- **APPOINTMENTS: STUDENTS SHOULD BE PICKED UP IN THE MIDDLE SCHOOL MAIN OFFICE**
 - LIMITED VISITOR PARKING IN REAR PARKING LOT NEAR THE FOOTBALL FIELD OFF CAMPUS DRIVE**



CAMPUS BELL SCHEDULE

- Doors (North entrance) open at 7:00
- 2nd period begins at 8:18
- 7 periods (45 minutes)
- 30 minute lunch
- 30 minute Mentor Period
- Dismissal 2:57
- Office Hours twice a week on Tuesday and Wednesday @ 7:30



CAMPUS BELL SCHEDULE

MS	
Warning Bell: 7:25	
1	7:30-8:15 EARLY BIRD / Staff Collaboration
2	8:18-9:03
3	9:06-9:51
4	9:54-10:39
5	10:42-11:27
6	11:30-12:15
L1	12:18-12:48
L2	12:51-1:21
7	1:24-2:09
8	2:12-2:57

HOMEROOM -8/22 ONLY (FIRST DAY)

- **Homeroom assignments can be found posted on the bright pink paper in the 6th grade hall**

8:18-8:28

- **SCHEDULES - most recent updated schedule**
- **LOCKERS**
- **BELL SCHEDULE**
- **Back to School Announcements/Bldg Expectations**

STUDENT LOCKERS

- ALL STUDENTS HAVE BEEN ASSIGNED AN INDIVIDUAL LOCKER
- LOCKER ASSIGNMENT AND COMBINATION CAN BE FOUND ON THE TOP RIGHT OF THE STUDENT SCHEDULE
- STUDENTS ARE RESPONSIBLE FOR MAINTAINING THE CLEANLINESS OF THEIR LOCKER
- STUDENTS MUST REMEMBER THEIR COMBINATION
 - STAFF MEMBERS ARE ALWAYS AVAILABLE TO ASSIST OPENING LOCKERS. COMBINATIONS CAN BE RETRIEVED IN THE MIDDLE SCHOOL MAIN OFFICE THROUGHOUT THE SCHOOL YEAR FROM Ms. McElroy
- ORGANIZERS, MIRRORS AND DECOR ARE PERMITTED INSIDE LOCKERS AS LONG AS THEY DO NOT CAUSE DAMAGE TO SCHOOL PROPERTY.



TECHNOLOGY

2021 MACBOOK AIR

- **STUDENTS WILL RECEIVE THEIR LAPTOPS WITHIN THE FIRST FEW DAYS OF SCHOOL.**
- **Please make sure all Emergency Medical forms are completed**
- **Students need the technology agreement signed in order to receive their device**

CELL PHONES

- **STUDENTS MAY BRING A CELL PHONE TO SCHOOL. PHONES SHOULD REMAIN IN THEIR LOCKER. FPCS IS NOT RESPONSIBLE FOR LOST OR STOLEN CELL PHONES.**

TECH ISSUES/QUESTIONS: SUPPORT@FAIRVIEW.K12.OH.US



MACBOOK EXPECTATIONS

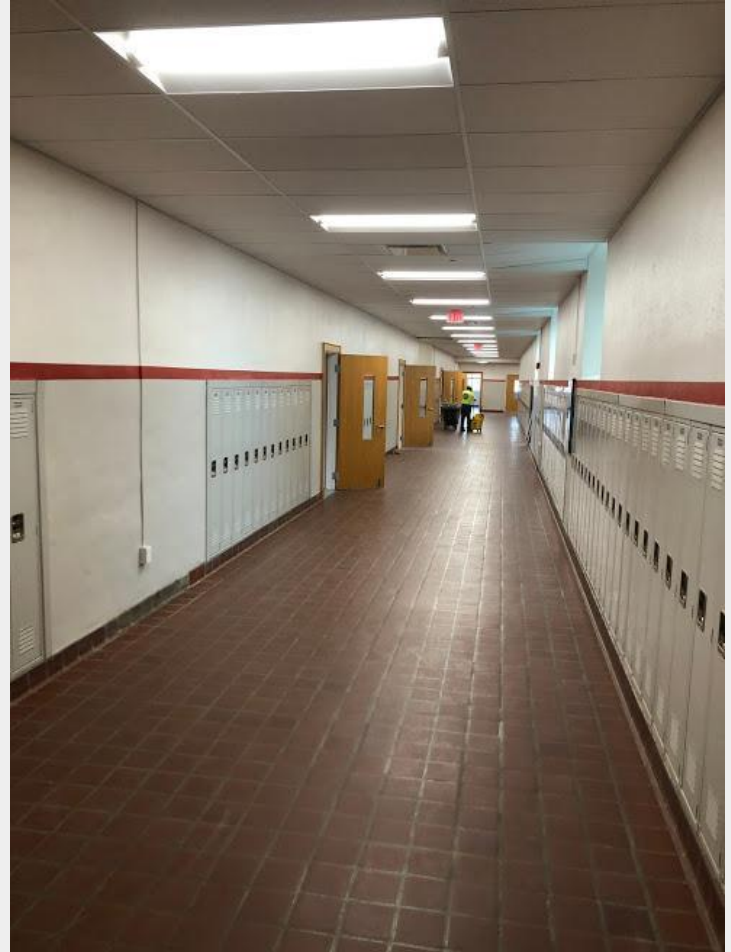


- Each student is issued a MacBook, charger and case.
- Students are allowed to take them home.
- Students are responsible for charging the computer each night.
- If the charger is lost, students can purchase a new one through the Innovation Center or on their own.
- If the computer is broken, the Innovation Center will provide a loaner.
- Macbook insurance is \$50 with a \$50 deductible. Intentional damage may result in a higher deductible and/or the student may be charged to replace the device.

The Fairview Park City School network, and all technology devices and tools used on the network, are to be used for educational purposes only.

Hallway Responsibility

- Lockers-Only enter yours
- Hall Passes-You'll need one
- Leaving classes-Ask teacher first
- Restrooms-Get in..Get out (wash hands 😊)
- Behavior-Inside voices.
- No running, jumping, and hands to yourself.



School Dress Code – Student Handbook

- The following guidelines shall constitute the student dress code.
- Students shall, at all times, wear some kind of shoes and/or sandals.
- Shorts and skirts should provide adequate coverage to the thigh.
- Dark glasses are not to be worn unless prescribed by a doctor.
- Style of dress that exposes the midriff is prohibited. This prohibition includes the exposure of the front, rear and sides of the waist. Tank tops, cutoff shirts or any garment, which reveals undergarments, are not appropriate. All tops should have two straps.
- All hats and head coverings worn are not to include vulgar, obscene, libelous, or denigrate others because of race, color, weight, religion, religious practice, ancestry, national origin, ethnic group, gender/sex, sexual orientation or disability, etc.. If a student is asked to remove a hat or other headgear by any school personnel, the request must be honored promptly with no discussion.
- Garments including head coverings that advertise or display illegal and/or inappropriate activities for young people (drugs, alcohol, violent activities, tobacco, promiscuity, guns, or reference to cults, gangs, etc.) are not permitted.
- Holes in clothing cannot reveal any undergarments.
- See-through leggings are not permitted.
- Students are NOT permitted to bring blankets/pillows/stuffed animals to school or walk around with blankets wrapped around any part of their body.

Lunch and Mentoring

- L1 Lunch
- L2 Mentoring
- 30 MINUTES each
- Breakfast \$1.85 and Lunch \$3.50
- Free & Reduced Lunch - forms are available on the district website
- My School Menu App - select school, lists nutrition and allergy information, translates into any language
- DAILY MENTORING FOR ALL STUDENTS:
 - * ACADEMIC CHECK-INS
 - * SOCIAL EMOTIONAL CHECK-INS
 - * SHARED PROGRESS NOTES WITH TEAM



ABSENCES

- **IT IS THE RESPONSIBILITY OF THE STUDENT TO COMMUNICATE WITH THE TEACHER REGARDING WHAT WAS MISSED WHILE ABSENT FROM SCHOOL**
- **ASSIGNMENTS, RESOURCES AND CURRENT PROGRESS LEVELS ARE ALWAYS POSTED AND AVAILABLE ON THE SUMMIT LEARNING PLATFORM.**
- **STUDENTS AND PARENTS CAN ALWAYS EMAIL TEACHER FOR ADDITIONAL INFORMATION**
- **IF YOU BECOME ILL AT SCHOOL, PLEASE SEE OUR SCHOOL NURSE IN THE HIGH SCHOOL MAIN OFFICE.**

SCHOOL NURSE

(440) 356-3500 X 4109



ATTENDANCE HOTLINE

MS. JAN LOCKWOOD--(440) 356-3500 X 4104

PLEASE CONTACT ATTENDANCE AS SOON AS:

1. YOU KNOW YOUR STUDENT WILL BE ABSENT.
2. YOU KNOW YOUR STUDENT WILL BE TARDY.
3. YOU KNOW YOUR STUDENT NEEDS TO LEAVE EARLY.
4. YOU KNOW YOU ARE GOING ON VACATION DURING THE SCHOOL YEAR.

STUDENTS ARRIVING LATE: MUST ENTER THE HS FRONT ENTRANCE,
CHECK IN WITH DOOR MONITOR AND TRAVEL TO THE
ATTENDANCE OFFICE TO OBTAIN A TARDY SLIP.

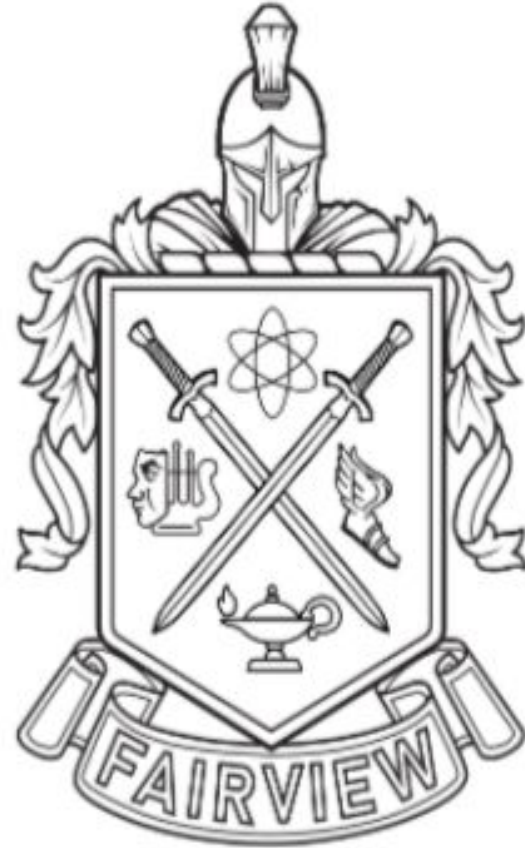
TARDY POLICY - IF UNEXCUSED TO SCHOOL

- 1 TARDY = 1 DETENTION UP TO 3 TARDIES/3 DETENTIONS
- 4TH TARDY = Extended Tuesday Detention



ACADEMICS

- Language Arts / Advanced Language Arts
- Math 6 / Advanced Math 6
 - 2 periods = 90 minutes/day
- Science 6
- Social Studies 6
- Music
 - (Band, Choir, Orchestra, Music Appreciation)
- STEAM / Physical Education & Health
 - Semester of each - if schedule permits



STUDENT SKILLS PROFILE

Mission: We work to provide our students with The Fairview Advantage, a framework for student success, by delivering exceptional services and academic programs that challenge the mind and instill the joy of learning and responsible citizenship

Create

Innovate

Investigate

Collaborate

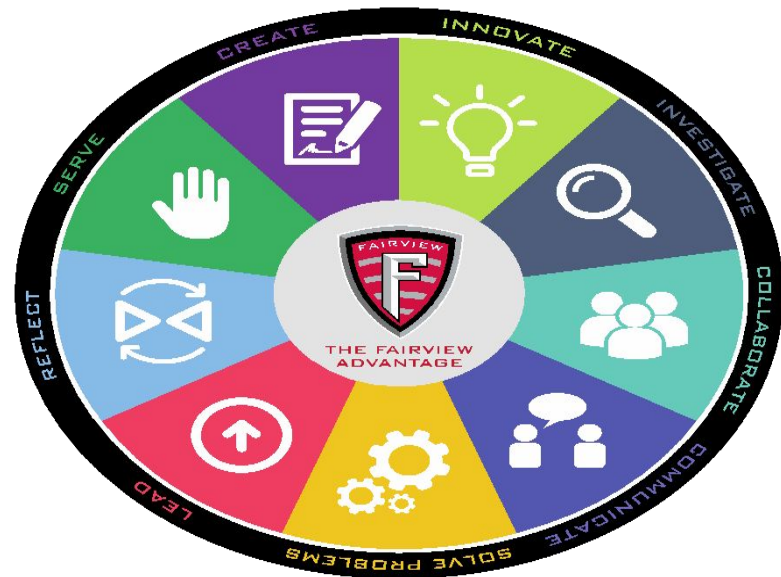
Communicate

Solve Problems

Lead

Reflect

Serve



PROCESS

- At the middle school, students need to acquire knowledge, skills, and study habits that provide a foundation for high school academics.
- Students earn A, B, C, D, or F.
- No “rungs on the ladder to mastery” of standards should be missed.
- Interim and quarter grades will be posted to Powerschool.
- Progress detail found within the Summit Platform.
- Grades are not averaged quarterly but remain “work in progress” over the course of a school year.



Continuous improvement is key at
ALL levels of achievement.



LEARNING AND COMMUNICATION TOOLS

The Summit Personalized Learning Platform

Google Classroom

Remind App



SUMMIT LeARNING™



Google Classroom

School Counseling, Grades 6-9

Dear Class of 2030,
We are very excited to have you join us here
at Mayer Middle School, welcome!!

~ Mrs. Cory

*Classroom Visits

*Office Visits

- Complete and turn in a request form, found in the Counseling Office
- Mrs. Moomaw or Mrs. Cory will schedule an appointment and email the information to you
- You inform your teacher and ask for a pass to attend the appointment

Visit the [website](#)

Follow us on Twitter - @Fviewcounselors

YOU ARE A WARRIOR



YOU'VE GOT THIS!

CLUBS & UPCOMING ATHLETIC OPPORTUNITIES

MR. JON ADAMS- jadams@fairview.k12.oh.us, @FPWarriorSports

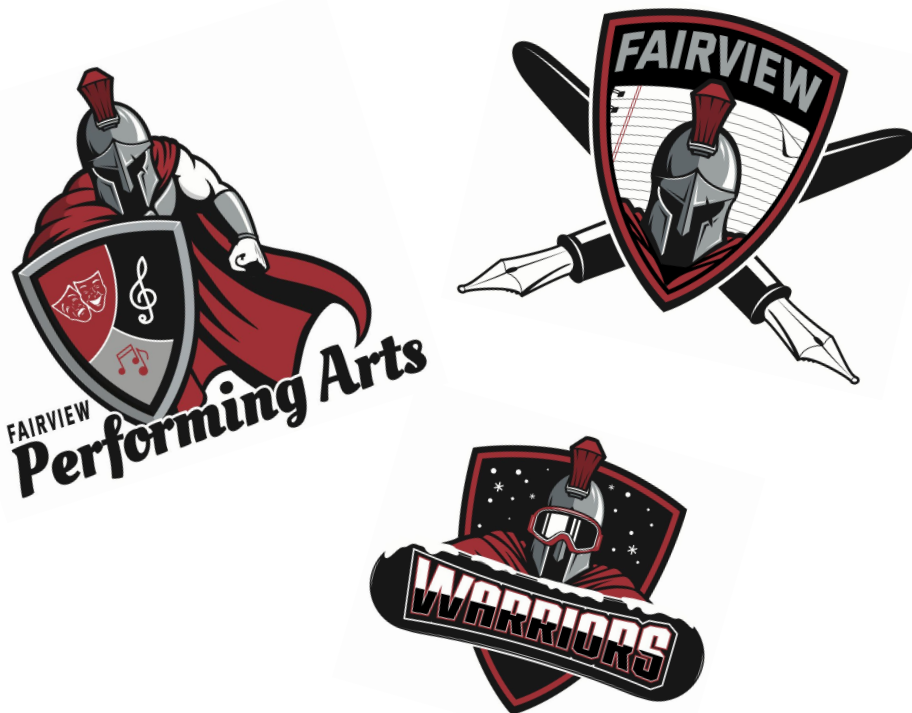
MS/HS ATHLETIC DIRECTOR

- MS SPORTS BEGIN IN 7TH GRADE

- Football
- Cross Country
- Volleyball
- Boys/Girls Basketball
- Wrestling
- Track
- Softball
- Cheerleading

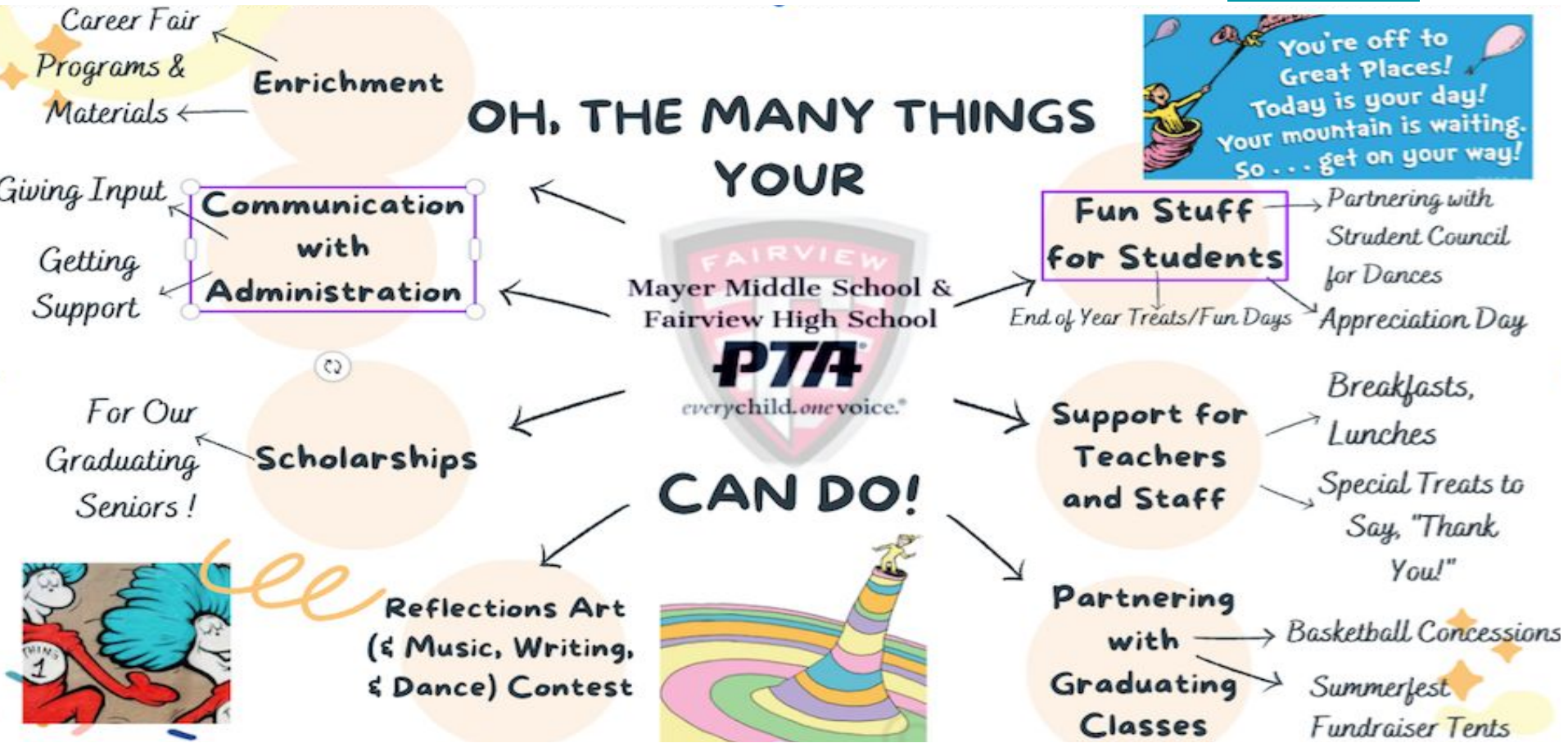
- MS CLUBS/ACTIVITIES:

- POWER OF THE PEN
- BOOK CLUB - 6th
- STUDENT COUNCIL - 6th
- BUILDERS CLUB - 6th
- SKI CLUB - 6th
- STAGECRAFTERS



PTA Cassie Hewitt - PTA President and MS & HS Parent; fairview.pta.mshs@gmail.com

PTA MEMBERSHIP FORMS / QR codes AVAILABLE IN THE BACK OF THE AUDITORIUM AND [LINKED HERE.](#)



SCHEDULES & SELF-GUIDED TOUR

MAKE SURE TO VISIT:

- 1. ALL ASSIGNED CLASSROOMS**
- 2. STUDENT LOCKER (OPEN IT A FEW TIMES)**
- 3. MIDDLE AND HIGH SCHOOL MAIN OFFICES (REMINDER: CLINIC IS IN HS MAIN OFFICE)**
- 4. CAFETERIA**
- 5. ATTENDANCE OFFICE**
- 6. GUIDANCE (SCHOOL COUNSELING) OFFICE**
- 7. DROP-OFF AND PICK-UP LOCATIONS**

WARRIOR NATION

THANK YOU FOR ATTENDING

