

# A Framework for Student Success

We believe that developing competent, well-rounded students with lifelong skills is critical to their success. We provide a broad spectrum of unique learning experiences that will prepare them for the future.



## PERSONALIZED, PROJECT-BASED LEARNING

Personalized, project-based learning engages students and encourages collaboration and creativity while promoting authentic work and assessment. At FPCS, each student has a pathway that makes sense to them and that is connected to their long term goals and aspirations.



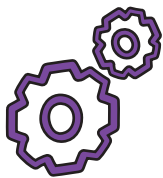
## ELECTRONIC PORTFOLIOS

Students in grades K-12 publish their work to an online digital portfolio. They showcase their work through various media, including photos, videos, and graphics. This practice is aligned with the Fairview Advantage skills set and helps students understand the various best practices when it comes to online publishing.



## INNOVATION CENTER

Students at Fairview High School and Mayer Middle School have access to professional equipment for creating and exploring a wide variety of projects. The Innovation Center houses 3D printers, a laser cutter, a vinyl cutter, five iPads, nine iPad Pros, Apple Pencils, 30 iMacs and a Mac Pro Media Server. Also, there's a large format printer, color photo printer, video and photo cameras, a green screen and black screen photo-video studio, screening room for presentations and critiques, and an audio recording studio. Over the summer of 2016, teachers and staff transformed what was once the library into a space that inspires creativity and innovation.



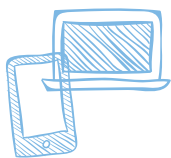
## SUMMIT LEARNING PLATFORM

The district utilizes an online learning management tool, the Summit Learning Platform, which supports the district's personalized, project-based learning model of engaging students, encouraging collaboration and creativity, and promoting authentic work and assessment.



## MENTORING

Students in the high school and middle school are assigned a faculty mentor to serve as an additional support system throughout the year. Students also send weekly communications to their parents/guardians during their mentoring time, giving them an update on their coursework.



## ONE-TO-ONE TECHNOLOGY INITIATIVE

In 2006, the district implemented the one-to-one technology initiative. Students in grades K-5 are assigned a device (iPad) to use at school, and students in grades 6-12 have a device (laptop) to use both at home and at school.



## ENHANCED EARLY LEARNING

The district implemented full-day, tuition-free Kindergarten at the beginning of the 2016-17 school year. At the Parkview Early Education Center, children ages 18-months through pre-K are actively engaged in the Creative Curriculum.



## SENIOR EXIT INTERVIEWS

Graduating seniors will present their portfolio of work up through 12th grade for a panel of faculty, staff, and community members to demonstrate how they have implemented the Fairview Advantage skill set in their coursework.

At Fairview Park City Schools, our educational vision is to be a Community united, empowering each other to learn differently, care deeply, and aspire to excellence. **The Fairview Advantage** is the district's framework for student success. We deliver this model through exceptional services and academic programs that challenge the mind and instill the joy of learning and responsible citizenship.



## JUNIOR EXPERIENCE

Students in the 11<sup>th</sup> grade participate in an active internship with a local business to identify a problem or unique challenge of the business. Then, using the skills outlined in the Fairview Advantage, work to solve that problem and elevate the business through innovation and collaboration with employees and leaders in the field. Students then create a summary review of their experience and present what they've learned to their faculty mentor. Students also incorporate a college visit experience into their portfolio.



## TUTORING

Academic support is available for all students before and after school, during winter and spring breaks, and over the summer. Those interested in tutoring can contact the main office to sign up.



## BRANCHING MINDS

The Branching Minds program empowers intervention teams and classroom teachers to figure out exactly what the root of a student's problem is, as well as precisely which support will meet that student's needs. Our tool is steeped in the latest academic research on assessing learning differences, as well as the experiential knowledge of teacher experts. We are also advised by top academics and professionals in the fields of special and general education.



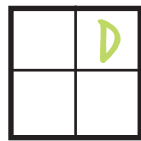
## S.T.E.A.M. LAB AND MAKER SPACE

There are many opportunities for students to engage in Science, Technology, Engineering, Arts, and Math (STEAM) and encouraging design thinking and a "maker" culture within the district. At Gilles-Sweet Elementary, students have a STEAM room where they are able to tinker, problem-solve, and collaborate with fellow students. At the middle and high schools, the Innovation Center provides a space for students to create, innovate, and more.



## TEACHER COLLABORATIVE TIME

Teachers meet daily to discuss curriculum alignment, embedded professional development, align their assessment strategies, plan collaborative projects together, and have discussions on hands-on learning opportunities.



## ICLE QUADRANT D FOCUS

The Rigor/Relevance Framework<sup>®</sup> is a tool developed by staff of the International Center for Leadership in Education to examine curriculum, instruction, and assessment. "D" focuses on Developing students' competence to think in complex ways, emphasizing evaluating,



## FUTURE READY SCHOOLS

We partner with this national coalition that helps schools implement personalized, research-based digital learning strategies so all students can achieve their full potential.



## STANDARDS/COMPETENCY BASED GRADING

Grounded in conviction that all students can learn. Insists on excellence and high achievement. Creates flexibility, allows students to progress as they demonstrate mastery of academic content, regardless of time, place, or pace of learning.



## FORMATIVE INSTRUCTIONAL PRACTICES

Research-proven teaching strategies that focus on Ohio Learning Standards and emphasize clear learning targets, performance assessment, feedback, and student ownership of learning.



## HOUR OF CODE

The district participates in the Hour of Code across many grade levels. The Hour of Code introduces computer science and broadens participation in the field.



## A DESIGN THINKING FOCUS

Design thinking begins with the premise of tapping into student curiosity and allowing them to create, test and re-create until they eventually ship what they made to a real audience (sometimes global but often local). Design thinking isn't a subject or a topic or a class. It's more of way of solving problems that encourages risk-taking and creativity. Design thinking is a flexible framework for getting the most out of the creative process. It is used in the arts, in engineering, in the corporate world, and in social and civic spaces.